

¹Mahmut Tokur, ²Can Kurkcuoglu, ³Sedat Demirçan, ³Cuneyt Kurul
¹Kahramanmaraş Sutcu Imam University, Medicine Faculty, Department of Thoracic Surgery, Kahramanmaraş,
²Harran University, Medicine Faculty, Department of Thoracic Surgery, Sanliurfa,
³Gazi University, Medicine Faculty, Department of Thoracic Surgery, Ankara, Turkey

46 year-old woman patient, it was learned that she had 10 operations between for this congenital mass lesion. At physical examination, there was a mass lesion originating at the inferior margin of scapula and extending to the medial side of the right breast. There were multiple varicose dilatations in it. Multiple scars were also detected on the surface of the lesion due to previous operations (Figure 1A-1B). There was a tenderness and a thrill with palpation.



Figure 1. Multiple scars were also detected on the surface of the lesion due to previous operations. (A, B)

Computerised Tomography sections revealed marked thickening at the soft tissues of right hemithorax. There were several soft tissue densities within the adipose tissue of right hemithorax with calcification in some of them. Same soft tissue densities were also seen within the right breast. There was pleural thickening and pleural mass lesions at the right hemithorax (Figure 2A). The bigger one contained submillimetric calcifications. There was cortical thinning, destruction and deformation at the right 6th costa.

Magnetic Resonans imaging revealed a huge mass lesion that invaded skin, subcutaneous fatty tissue and neighboring muscles. The lesion extends to lateral anterior chest wall. The costae from 3th to 7th were infiltrated. The mass lesion infiltrated the pleura. There was marked volume loss within the right hemithorax due to pleural and costal invasion (Figure 2B). There were widespread nodules throughout the right pleura, being located at the right upper lobe extending to the right middle and upper segment of the lower lobes. The breast tissue was also involved (Figure 2C-2D).

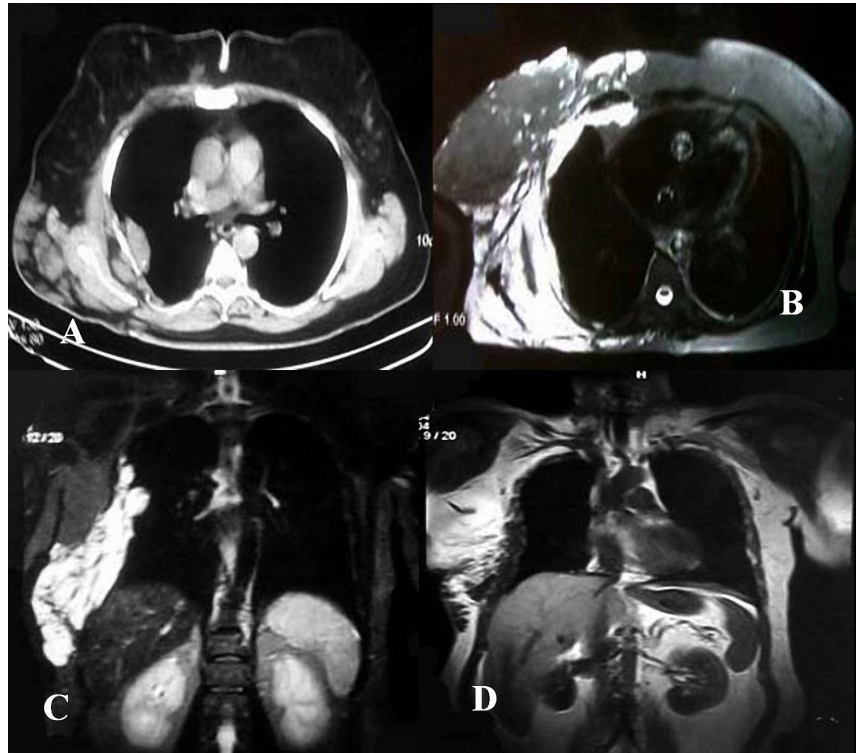


Figure 2. Computerised Tomography showed. (A) Magnetic Resonans Imaging showed. (B, C, D)